



Eterna Builds

COMPANY PROFILE

+961 3 665 002 / +966 507 515 273

info@eterna-builds.com

COMPANY OVERVIEW

Our brand represents the core of who we are — our purpose, our values, and the experience we aim to deliver. It is the foundation that shapes every visual, verbal, and strategic decision we make.

We exist to bring meaningful, memorable, and functional solutions to our audience through intentional design, consistent communication, and a commitment to excellence. Our brand is more than a logo or color palette; it is the identity that defines our presence in the market and the perception we create with every interaction.

OUR VISION

Our vision is to become a leading force in design and development, recognized for shaping timeless interiors and inspiring environments where creativity, comfort, and quality seamlessly merge. We strive to set new standards in excellence, sustainability, and client satisfaction across every project we undertake.

OUR MISSION

Our mission is to create meaningful, functional, and aesthetically refined spaces through thoughtful design, craftsmanship, and innovation. We aim to deliver exceptional value by transforming environments into experiences that enhance the way people live, work, and connect.

Design

Residential Spaces: Designing homes that combine comfort, style, and practicality.

Commercial Spaces: Crafting workspaces and retail interiors to boost functionality and brand identity.

Hospitality Design: Creating inviting and luxurious environments for hotels, restaurants, and resorts.

Execution & Contracting

Full-Service Construction: Managing projects from concept to completion.

Renovation and Remodeling: Revitalizing existing spaces to meet modern standards.

Custom Builds: Delivering tailored solutions for unique project requirements.

Project Management

Timeline and Budget Planning: Ensuring every project is delivered on time and within budget.

Quality Control: Overseeing construction to guarantee the highest standards are met.

Client Collaboration: Maintaining transparent communication to align designs with expectation

Sustainable Design Solutions

Eco-Friendly Materials: Incorporating sustainable practices and materials into every project.

Energy Efficiency: Designing spaces with energy-saving features and technologies

WHAT WE DO

Consultation and Concept Development

Understanding client needs, preferences, and budget.

Developing initial concepts and mood boards.

Design and Planning

Creating detailed 3D models and floor plans

Collaborating with clients to finalize designs

Execution and Construction

Project Delivery and Support

Delivering completed projects ready for use.

Providing post-project support and maintenance advice

WHY CHOOSE US ?

Expertise: A team of experienced designers, architects, structure engineers and project managers.

Creativity: Innovative designs tailored to meet each client's unique vision.

Quality Assurance: Commitment to using premium materials and delivering superior craftsmanship.

Transparency: Clear communication and detailed reporting throughout the project.

Sustainability: Emphasis on eco-friendly practices to build responsibly for the future.

OUR PORTFOLIO

BATHROOMS 3D RENDERING



OUR PORTFOLIO

KITCHENS 3D RENDERING



OUR PORTFOLIO

TV ROOMS 3D RENDERING



OUR PORTFOLIO

DINING & LOUNGE 3D RENDERING



OUR PORTFOLIO

BEDROOMS 3D RENDERING



OUR PORTFOLIO

BEDROOMS 3D RENDERING



OUR PORTFOLIO

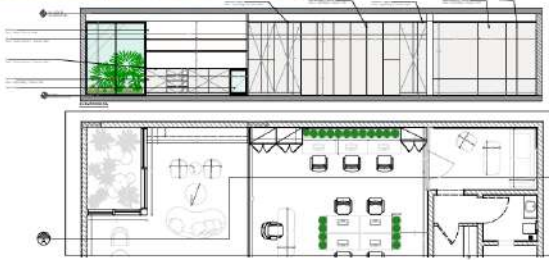
2D PLAN LAYOUTS & DETAILS

All material sample and one letter for the signage must be submitted for approval prior to manufacturing / site installation.

All site dimensions to be checked on-site contractor/designer.



Key Plan



All measurements must be verified on site. All dimensions and locations of MEP Service provision to be verified on site prior to construction.

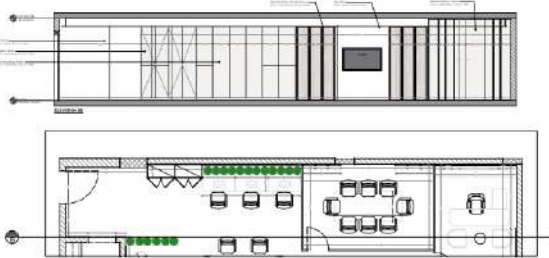
All joinery works exposed or concealed, store fittings, fixtures and finishes must be fire-rated.

All material sample and one letter for the signage must be submitted for approval prior to manufacturing / site installation.

All site dimensions to be checked on-site contractor/designer.



Key Plan

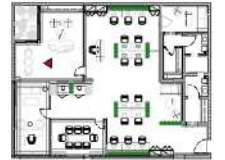


All measurements must be verified on site. All dimensions and locations of MEP Service provision to be verified on site prior to construction.

All joinery works exposed or concealed, store fittings, fixtures and finishes must be fire-rated.

All material sample and one letter for the signage must be submitted for approval prior to manufacturing / site installation.

All site dimensions to be checked on-site contractor/designer.



Key Plan



All measurements must be verified on site. All dimensions and locations of MEP Service provision to be verified on site prior to construction.

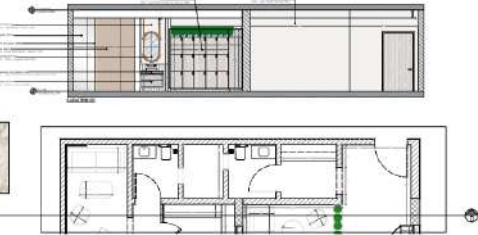
All joinery works exposed or concealed, store fittings, fixtures and finishes must be fire-rated.

All material sample and one letter for the signage must be submitted for approval prior to manufacturing / site installation.

All site dimensions to be checked on-site contractor/designer.



Key Plan

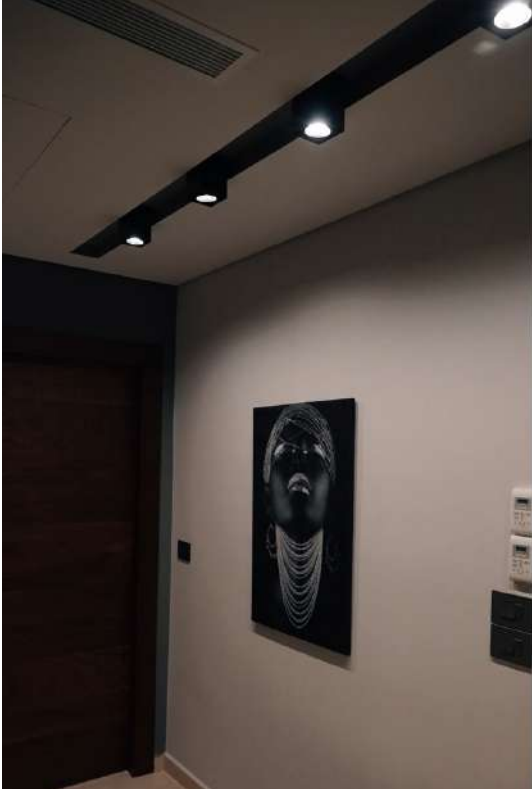


All measurements must be verified on site. All dimensions and locations of MEP Service provision to be verified on site prior to construction.

All joinery works exposed or concealed, store fittings, fixtures and finishes must be fire-rated.

OUR PORTFOLIO

PRIVATE VILLA EXECUTION



OUR PORTFOLIO

PRIVATE VILLA EXECUTION



OUR PORTFOLIO

RESIDENTIAL APARTMENT EXECUTION



OUR PORTFOLIO

RETAIL / COFFEE SHOP EXECUTION



OUR TEAM

Our talented and diverse team consists of interior designers, architects, structural engineers, and skilled craftsmen who are passionate about turning ideas into reality and ready for providing design drawings, design reviews and implementing shop drawings ready for execution. With a commitment to excellence, we collaborate closely with clients to ensure every detail is executed to perfection. Frequent updates and walkthroughs to maintain alignment with client expectations

CONTACT US

Office Address

Lebanon, Beirut - Riad Solh Street

+961 3 665 002

KSA, Riad - Al Malaz District

+966 507 515 273

info@eterna-builds.com